



Beaufort County Public Works Stormwater Infrastructure Project Summary

Project Summary: Wiggfall Road Channel #1

Activity: Routine/Preventive Maintenance

Narrative Description of Project:

Project improved 253 L.F. of drainage system. Grubbed and cleaned out 253 L.F. of channel. Installed (2) access pipes, rip rap and hydroseeded for erosion control. Jetted (1) crossline pipe.

Completion: Oct-14

2015-006 / Wiggfall Road Ch #1	Labor Hours	Labor Cost	Equipment Cost	Material Cost	Contractor Cost	Indirect Labor	Total Cost
APINS / Access pipe - installed	40.0	\$891.40	\$97.02	\$526.20	\$0.00	\$565.80	\$2,080.42
AUDIT / Audit Project	0.5	\$10.23	\$0.00	\$0.00	\$0.00	\$6.62	\$16.85
CLPJT / Crossline Pipe - Jetted	8.0	\$178.70	\$88.64	\$38.00	\$0.00	\$119.64	\$424.98
ESTP / Estimating Project	3.0	\$132.81	\$0.00	\$0.00	\$0.00	\$101.88	\$234.69
HAUL / Hauling	62.0	\$1,357.48	\$642.00	\$1,505.65	\$0.00	\$901.66	\$4,406.79
HYDR / Hydroseeding	9.0	\$201.72	\$23.30	\$67.66	\$0.00	\$135.42	\$428.10
ODCO / Channel - cleaned out	40.0	\$891.36	\$277.28	\$104.06	\$0.00	\$565.80	\$1,838.50
ODGRB / Channel - grubbed	67.0	\$1,537.19	\$368.82	\$120.50	\$0.00	\$761.11	\$2,787.62
ONJV / Onsite Job Visit	25.0	\$813.74	\$79.64	\$44.85	\$0.00	\$537.39	\$1,475.62
PL / Project Layout	6.0	\$265.62	\$21.72	\$26.91	\$0.00	\$203.76	\$518.01
PROFS / Professional Services	0.0	\$0.00	\$0.00	\$0.00	\$450.00	\$0.00	\$450.00
PRRECON / Project Reconnaissance	2.0	\$59.68	\$7.24	\$5.98	\$0.00	\$36.46	\$109.36
UTLOC / Utility locates	0.5	\$10.23	\$0.00	\$0.00	\$0.00	\$6.62	\$16.85
2015-006 / Wiggfall Road Channel #1 Sub Total	263.0	\$6,350.16	\$1,605.66	\$2,439.81	\$450.00	\$3,942.15	\$14,787.78
 Grand Total	 263.0	 \$6,350.16	 \$1,605.66	 \$2,439.81	 \$450.00	 \$3,942.15	 \$14,787.78

Before

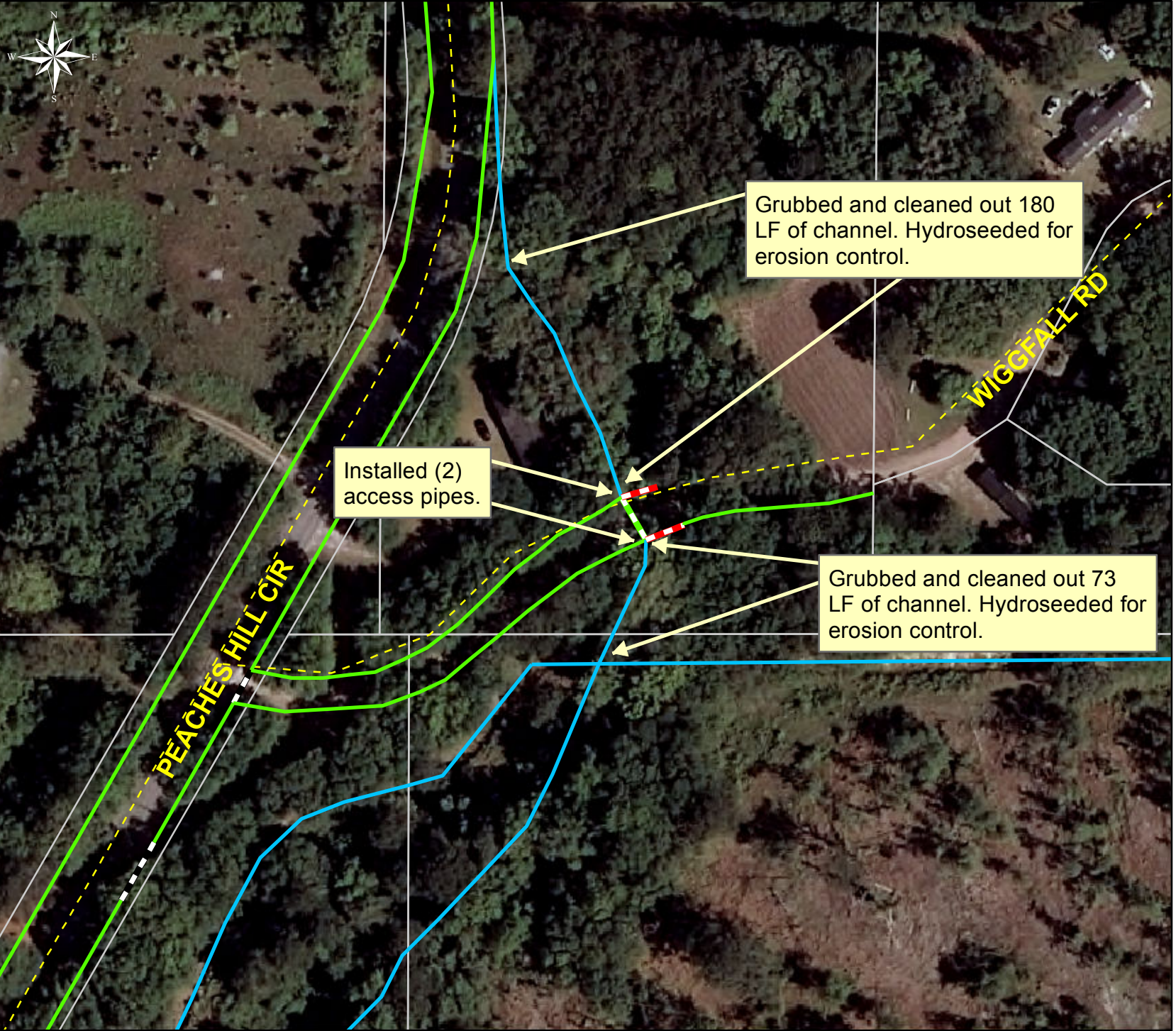


During



After





Project: Wiggfall Road Channel #1 Map 1

Activity: Routine/ Preventive Maintenance

Project #: 2015-006

Township: St. Helena Island

Completed: October 2014

Legend

TYPE	
	River
	Creek/Stream
	River/Creek/Marsh BANK
	Channel (fka Outfall)
	Channel Pipe
	Lateral
	Lateral Pipe
	Roadside
	Roadside Pipe
	Road Pipe
	Crossline Pipe
	Driveway Pipe
	Access Pipe
	Bleeder Pipe



1 inch = 91 feet

**Project: Wiggfall
Road Channel #1
Map 2**

**Activity: Vacuum
Truck**

**Project #:
2015-006**

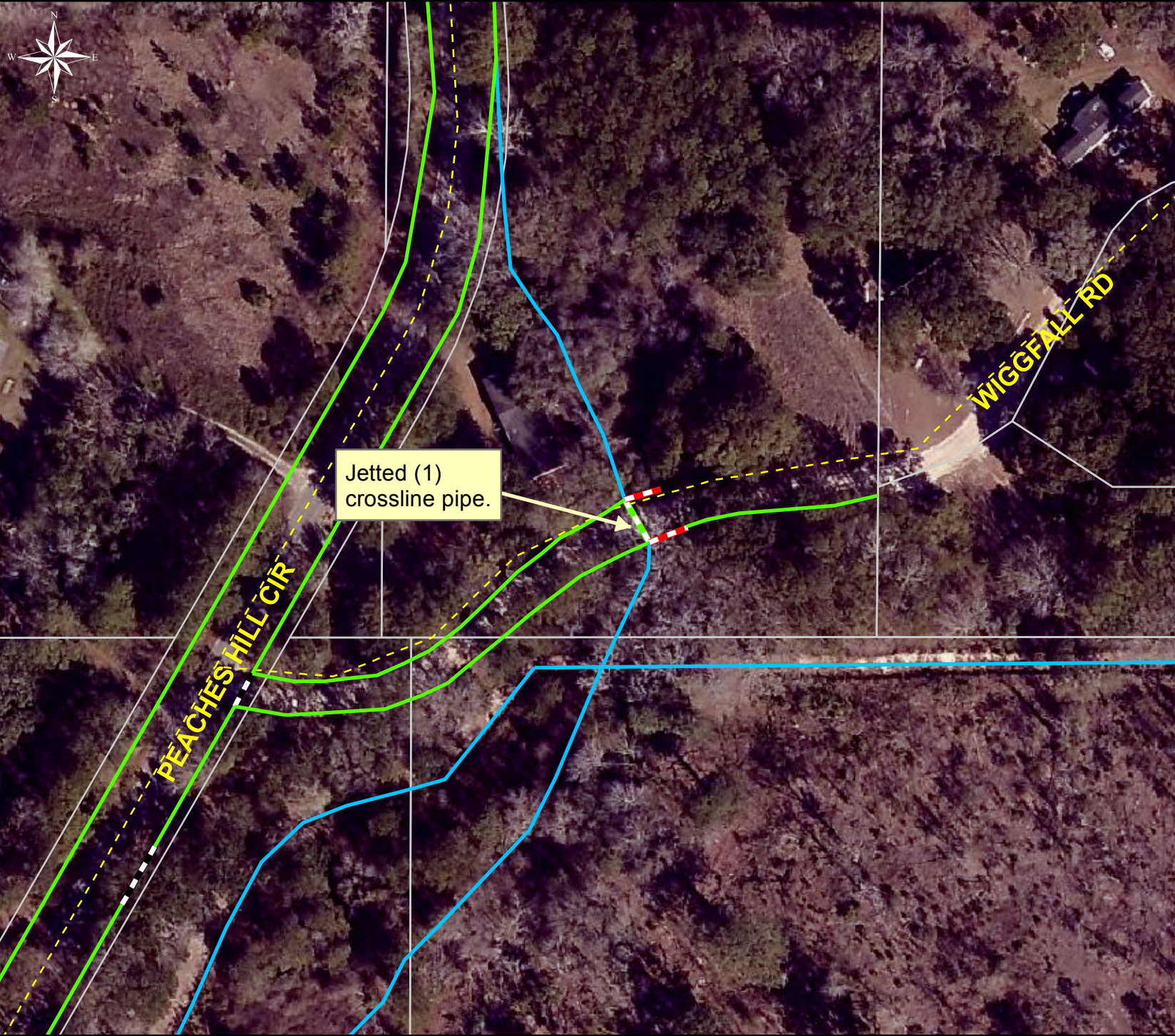
**Township: St.
Helena Island**

**Completed:
October 2014**

Legend

TYPE

- River
- Creek/Stream
- River/Creek/Marsh BANK
- Channel (fka Outfall)
- Channel Pipe
- Lateral
- Lateral Pipe
- Roadside
- Roadside Pipe
- Road Pipe
- Crossline Pipe
- Driveway Pipe
- Access Pipe
- Bleeder Pipe



1 inch = 91 feet